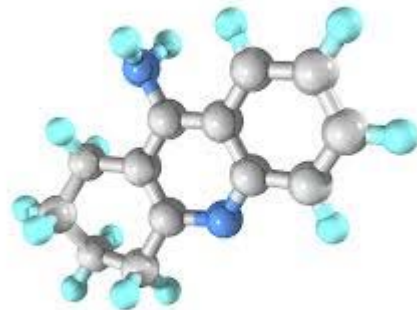
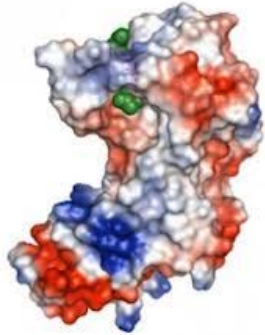


CloudPharmaceuticals

The In-Silico Therapeutics Company

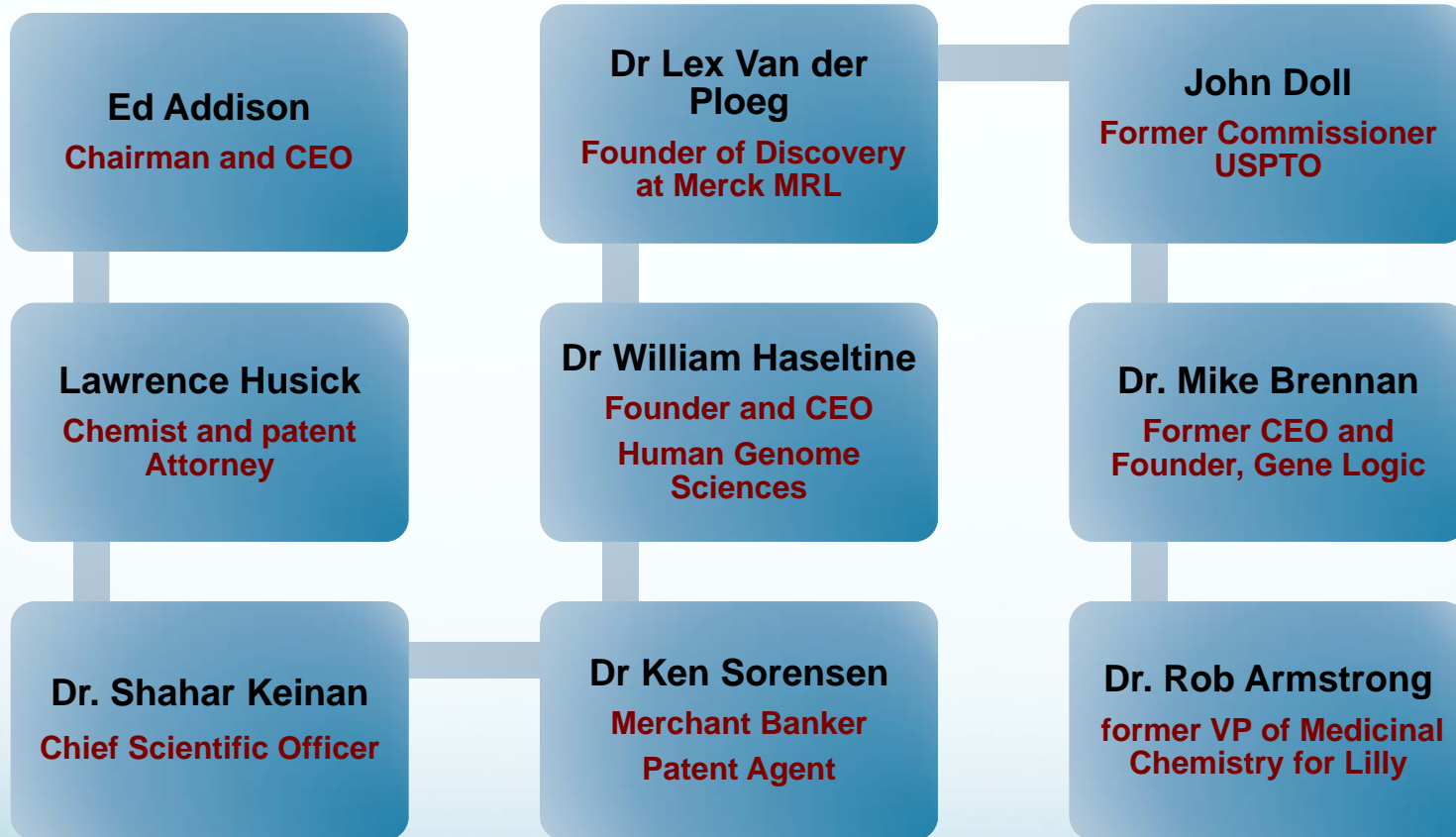


- **Unique In-Silico Drug Discovery Platform
Highly Efficient Virtual Preclinical Process**
- **Large Number of Novel Drug Assets being
to the Industry's Hardest Targets**
- **Launched in 2012 – Validating Partnerships with:
Pharma, IT and Government**
- **Better, faster, cheaper, lower tox path to the clinic**

Design

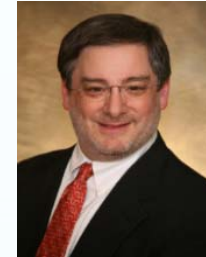
Biot

World Class Board of Directors





Ed Addison
Chairman, CEO
3 Exits



Lawrence Husick
Esq., CIO, IP
Attorney, Chemist

Experienced Management Team



**Dr. Shahar
Keinan** CSO,
Former Duke
Scientist



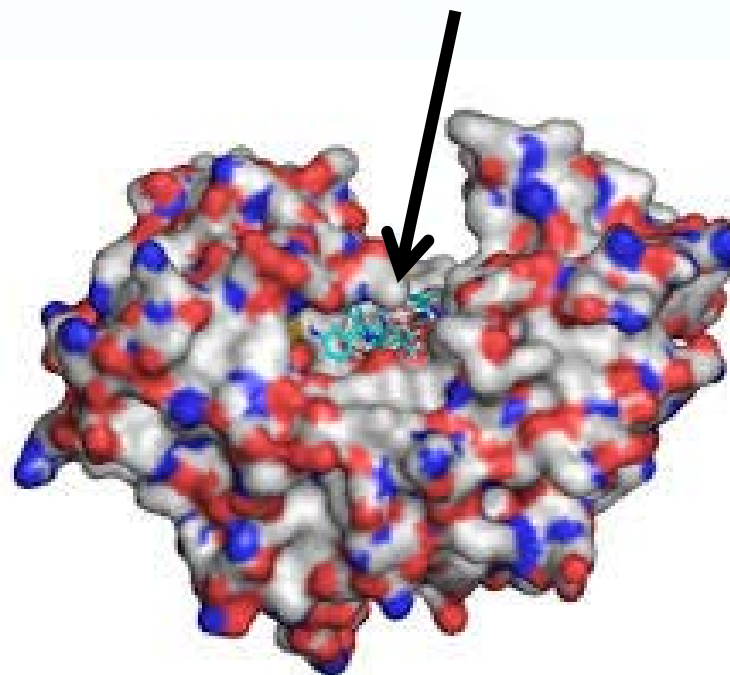
Dr. Ken Sorensen
Banker,
Transactions
Adviser



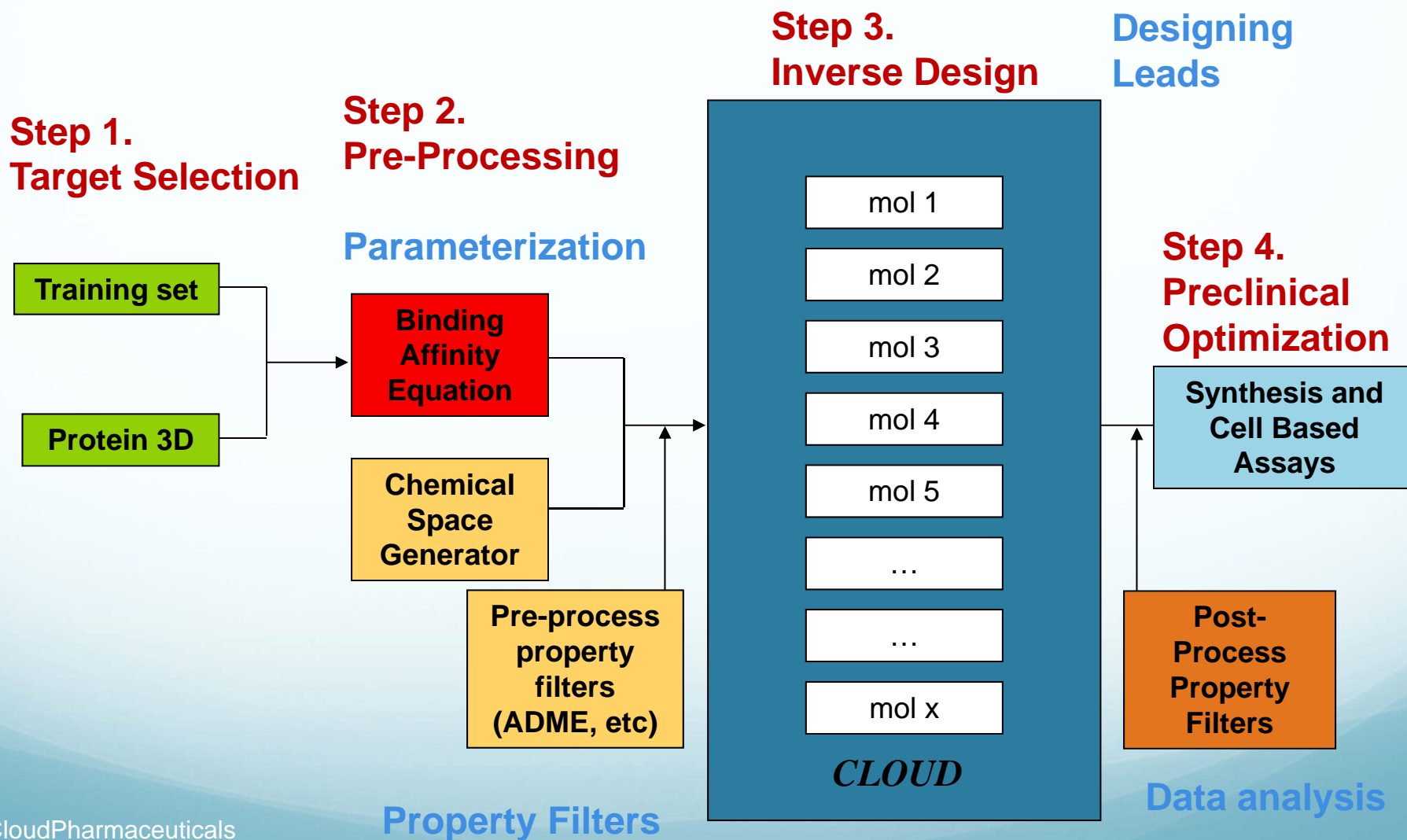
Don Van Dyke
Director Marketing
and Business
Development

Accurate Design of Novel Drugs

- Established QM/MM with Nobel Prize winning energy binding method
- Originally Developed at Duke University
- Highly accurate method for predicting ligand binding
- Unique flexible protein, flexible ligand, explicit water model
- Predictive modeling of many drug-like properties
- Higher probability of clinical success
- Small molecules and peptides

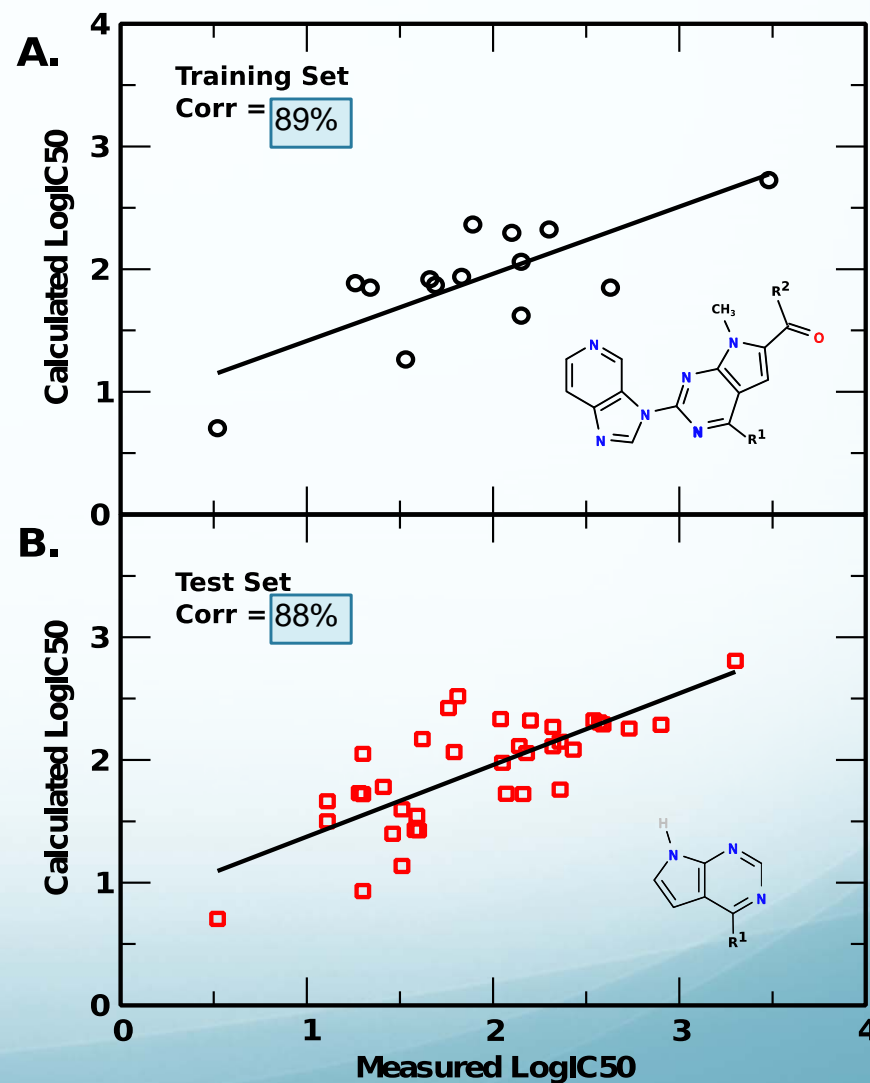
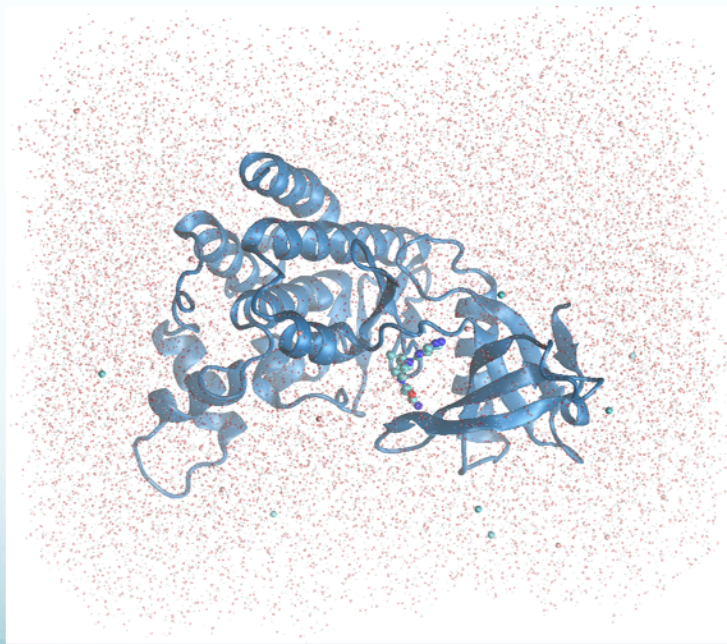


Cloud's Inverse Design Workflow: Rapid, Accurate and Novel



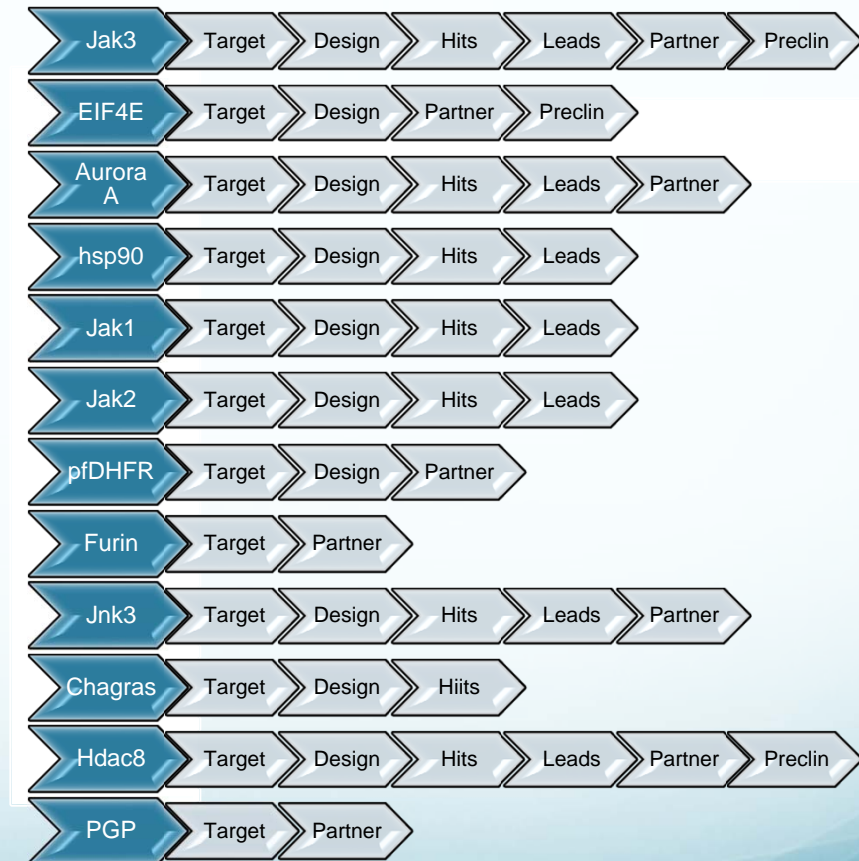
Cloud's Platform is Validated

Designed a selective drug for JAK3 with low activity for JAK1, JAK2, and TYK2 with 0.88 correlation. Predicts existing chemotypes and novel – self validating.



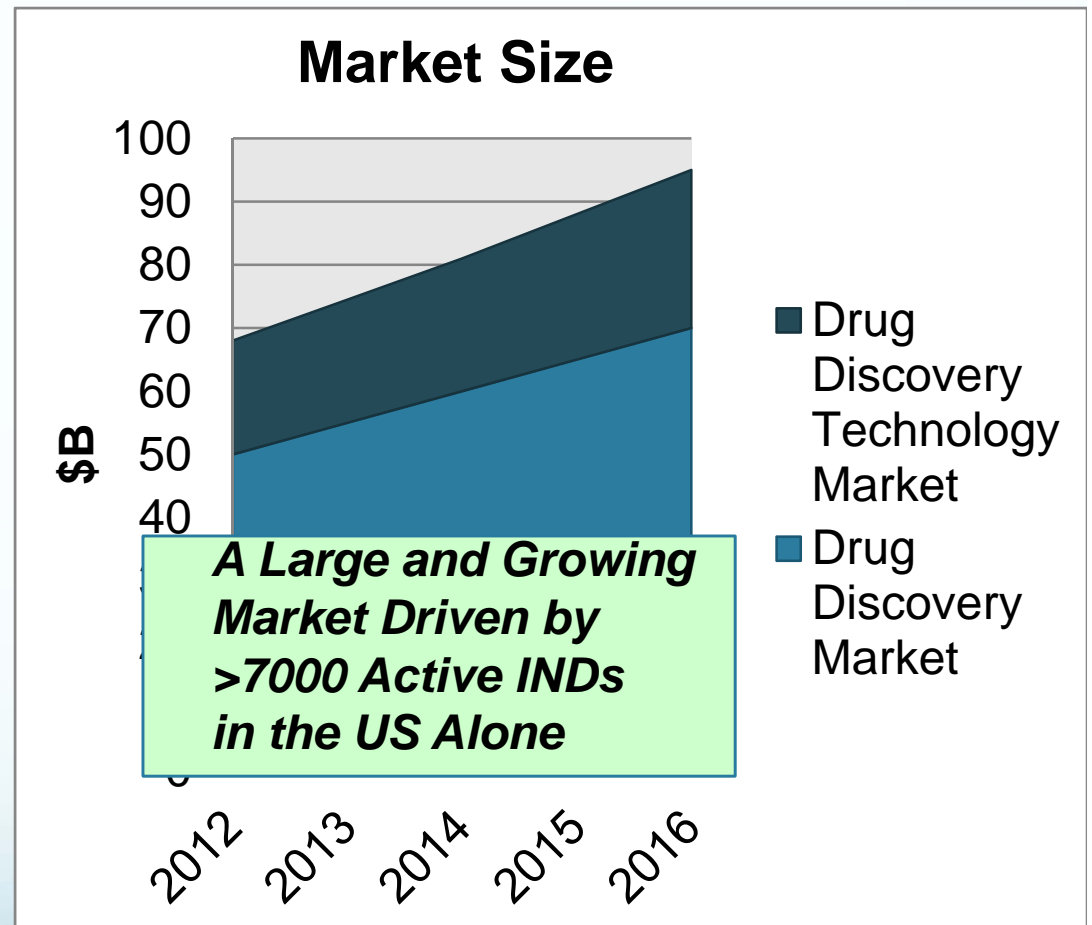
Business Model: Large Diversified Pipeline

- Design/Develop Leads for Many Targets
- Cloud Owns All or Part of Each Asset – Partner Heavily
- Move Quickly and Efficiently from Target to Phase 1
- LLC for Each IND Asset
- Take the Fast Path to Clinic

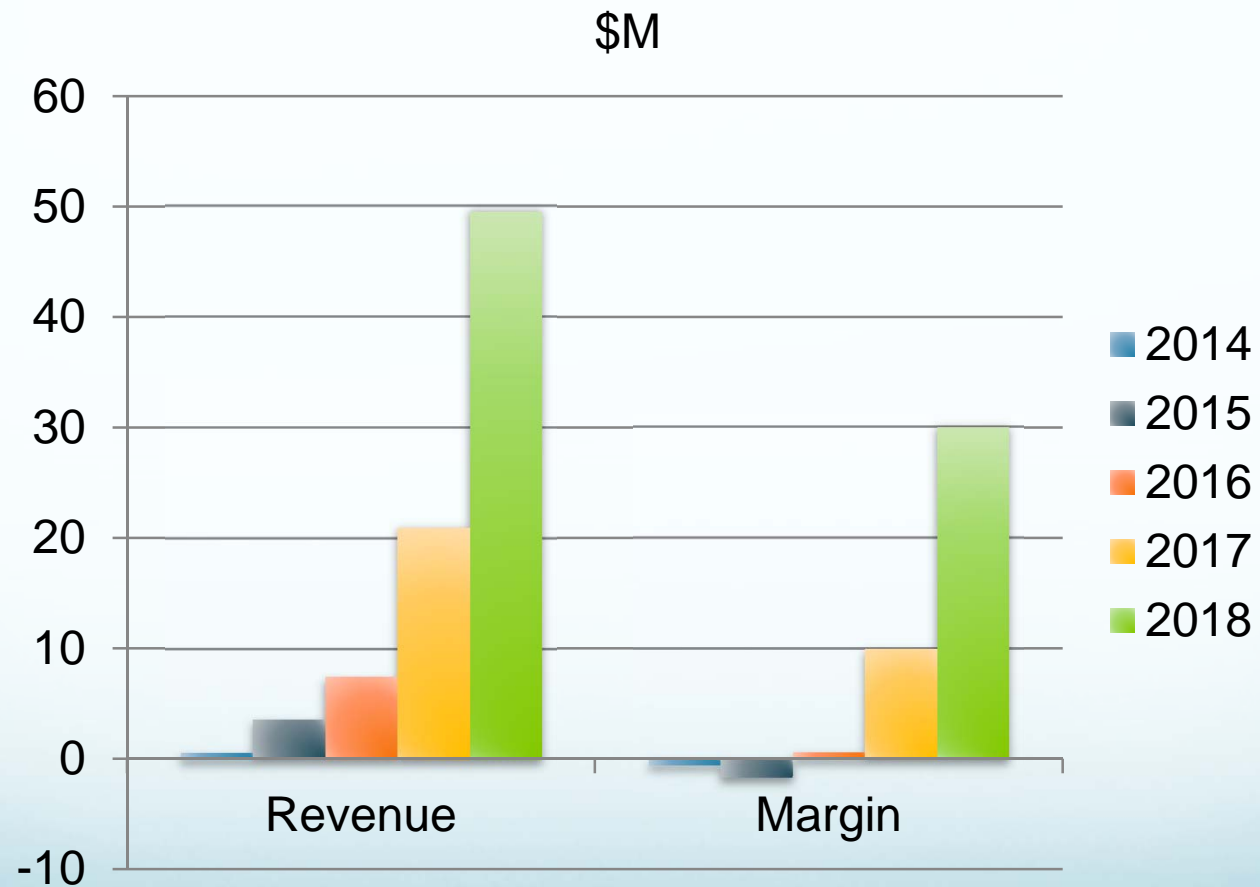


Market Penetration and Market Opportunity

- In the past 6 months, Cloud added:
 - 2 Biotech Partners
 - 2 Pharma Contracts
 - 2 Gov't Grants
 - 3 IT Collaborations
- **\$500K 6 Mo. Revenue – Forecast Upon Request –**



Financial Projection



Investment

- **SERIES B INVESTMENT**

- \$5M
- **Use of Proceeds**
 - High Volume Platform
 - Grow Revenue Base
 - 2 Assets to IND

- **CONTACT INFO**

Ed Addison, CEO, Chairman
910-398-1200
eaddison@teradiscoveries.com

Lawrence Husick, CIO, Director
610-296-8259
lhusick@teradiscoveries.com

Ken Sorensen, Director
917-940-1394
kaasorensen@gmail.com